

API Technical Overview

What is an envelope?

An envelope is a container for documents.

To send documents, users add them to a virtual envelope. That envelope is then transferred via the WAVE BL network to the designated business unit.

The WAVE BL API offers the following functionality:

- > Send envelopes and documents.
- > Retrieve documents from incoming envelopes.
- > Receive notification of incoming and outgoing envelopes and documents.

Envelope notification webhook

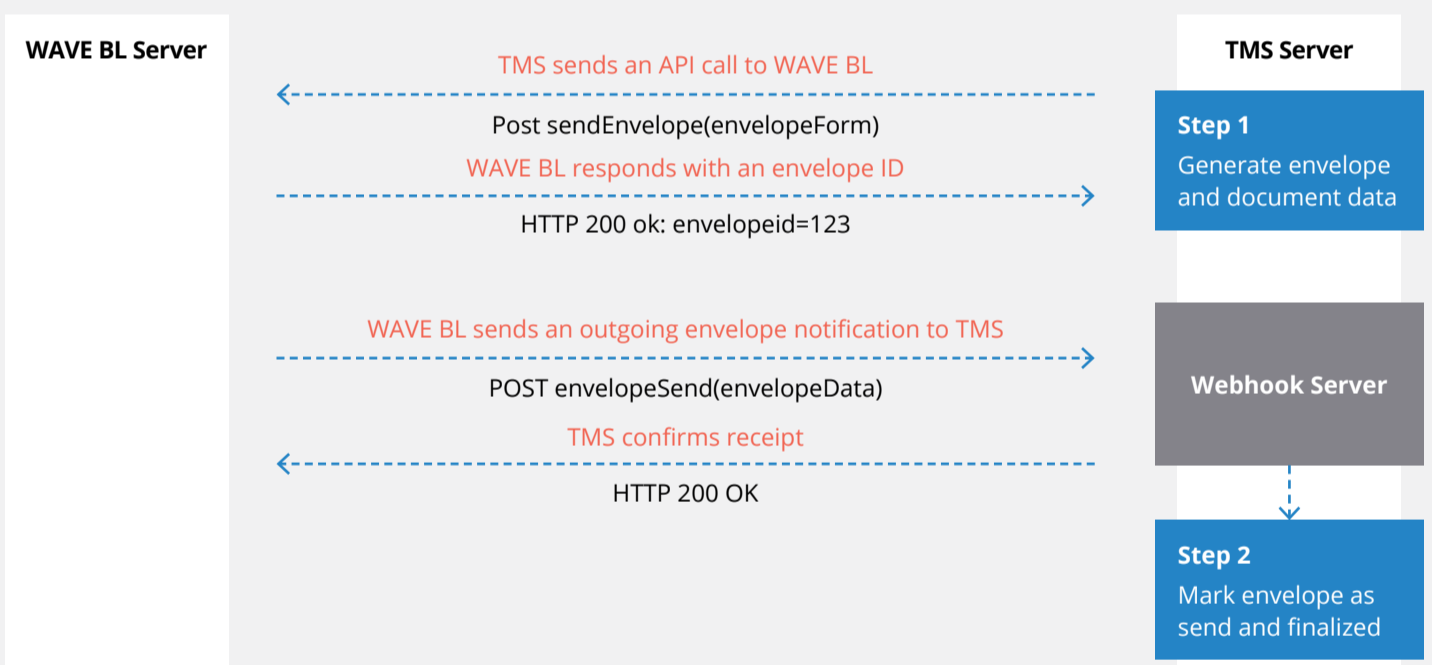
- > WAVE BL sends envelope event notifications to predefined webhook URLs.
- > Notifications are sent when an incoming envelope arrives and when an outgoing envelope is sent.
- > Envelope data is represented in JSON format.
- > All notifications can be resent if needed.

How data is transferred

- > We use JSON for data transfer.
- > API calls are authenticated and made via an SSL channel.

How it works

Sending envelopes from a TMS



Receiving incoming envelopes from WAVE BL

